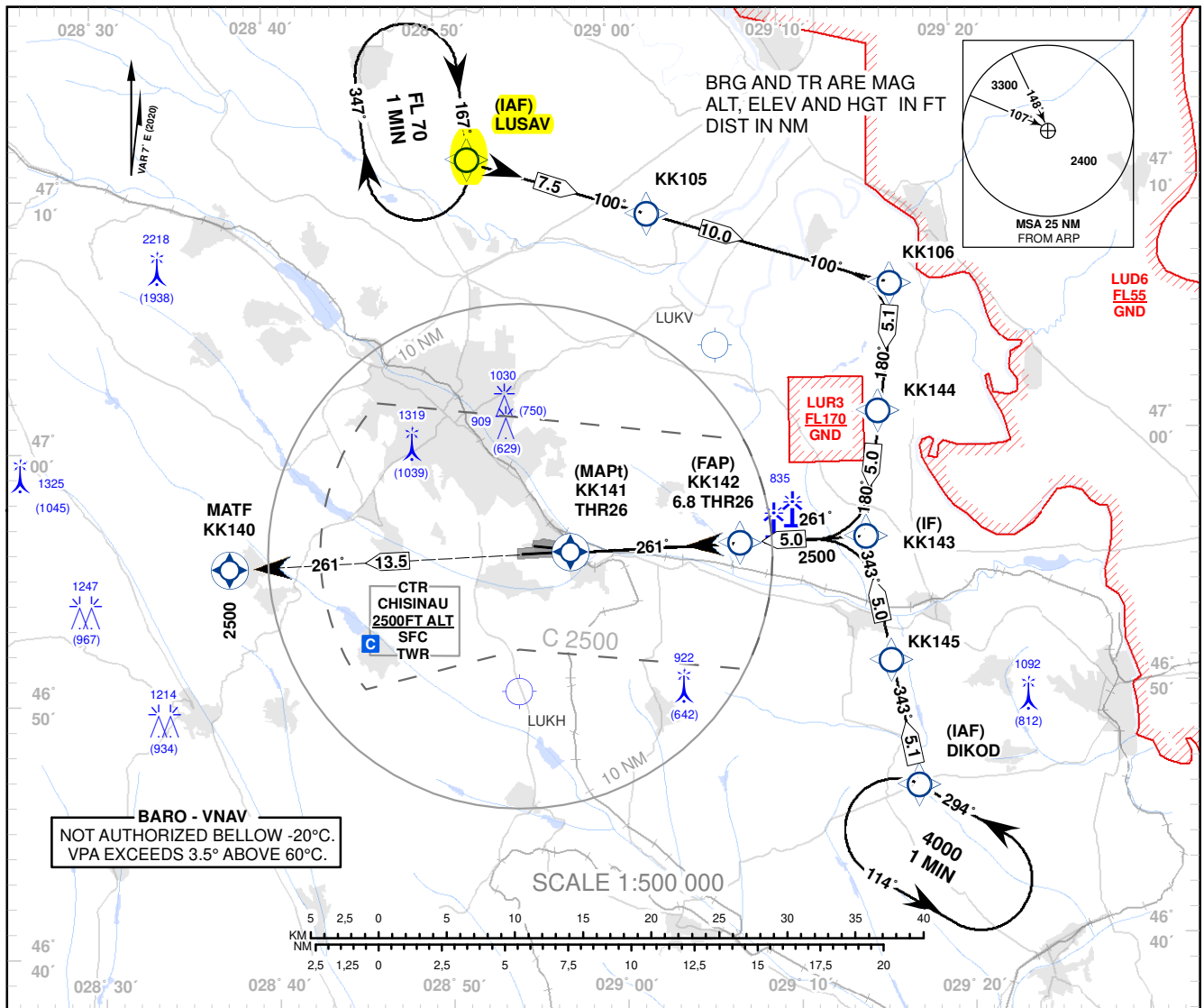


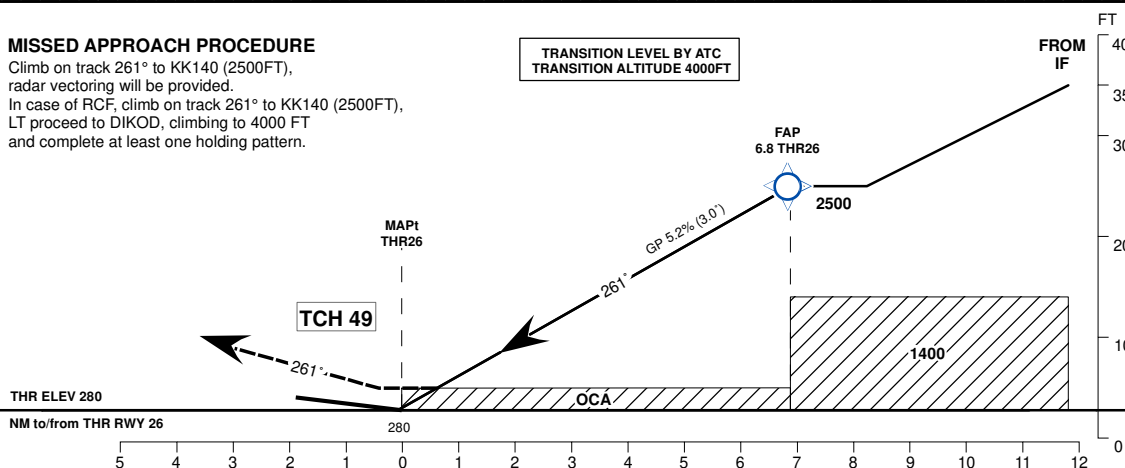
**INSTRUMENT APPROACH
CHART - ICAO**

 AD ELEV 399 FT
 HEIGHTS RELATED TO
 THR RWY 26 ELEV 280 FT

 APP: 133.300 MHz
 TWR: 118.100 MHz
 ATIS: 125.225 MHz

CHISINAU/Intl (LUKK)
RNP RWY 26
(LNAV&LNAV/VNAV ONLY)

MISSED APPROACH PROCEDURE

Climb on track 261° to KK140 (2500FT),
radar vectoring will be provided.
In case of RCF, climb on track 261° to KK140 (2500FT),
LT proceed to DIKOD, climbing to 4000 FT
and complete at least one holding pattern.

 TRANSITION LEVEL BY ATC
 TRANSITION ALTITUDE 4000FT


OCA(OCH)	A	B	C	D
LNAV	640 (360)	640 (360)	640 (360)	640 (360)
LNAV/VNAV	601 (321)	601 (321)	601 (321)	601 (321)

DIST THR	7	6	5	4	3	2	1
ALTITUDE (Height)	2500 (2220)	2240 (1960)	1921 (1640)	1603 (1323)	1285 (1005)	966 (686)	648 (368)

Timing not Authorised for Defining the MAPt.

Ground Speed	KT	80	100	120	140	160	180
DISTANCE FAP-MAPt 6.8NM	MIN:SEC	05:07	04:06	03:25	02:55	02:33	02:16
Rate of Descent (5.2%)	FT/MIN	425	531	637	743	849	955

Changes: CHISINAU CTR Changed. IF From 3500FT. Missed APCH Updated. "LUKV/National" Aerodrome Added.

INSTRUMENT APPROACH
CHART - ICAO

AD ELEV – 399FT
HEIGHTS RELATED TO
THR RWY 26 - ELEV 280FT

CHISINAU/Intl (LUKK)
RNP RWY 26
(LNAV&LNAV/VNAV ONLY)

TABULAR DESCRIPTION

RNP RWY 26											
Serial Number	Path descriptor	Waypoint Identifier	Fly-over	Course °M (°T)	°MAG VAR	Distance (NM)	Turn Direction	Altitude (FT)	Speed limit (Kt)	°VPA/ TCH (FT)	Navigation Specification
010	IF	LUSAV	-	-	+7.0	-	-	FL 70	-	-	RNP APCH
020	TF	KK105	-	100 (107.2)	+7.0	7.5	-	-	-	-	RNP APCH
030	TF	KK106	-	100 (107.4)	+7.0	10.0	-	-	-	-	RNP APCH
040	TF	KK144	-	180 (186.8)	+7.0	5.1	R	-	-	-	RNP APCH
050	TF	KK143	-	180 (186.8)	+7.0	5.0	-	+3500	-210	-	RNP APCH
010	IF	DIKOD	-	-	+7.0	-	-	4000	-	-	RNP APCH
020	TF	KK145	-	343 (350.0)	+7.0	5.1	-	-	-	-	RNP APCH
030	TF	KK143	-	343 (350.0)	+7.0	5.0	-	+3500	-210	-	RNP APCH
010	IF	KK143	-	-	+7.0	-	-	+3500	-	-	RNP APCH
020	TF	KK142	-	261 (268.3)	+7.0	5.0	-	@2500	-	-	RNP APCH
030	TF	RW26/ KK141	Y	261 (268.1)	+7.0	6.8	-	@329	-	3.00/49	RNP APCH
040	CF	KK140	Y	261 (268.1)	+7.0	13.5	-	2500	-	-	RNP APCH

WAYPOINT LIST

RNP RWY 26		
Waypoint Identifier	Coordinates	
IAF LUSAV	47°11'14.0"N	028°51'49.0"E
IAF DIKOD	46°46'06.0"N	029°17'03.0"E
KK105	47°09'00.5"N	029°02'17.9"E
KK106	47°06'00.8"N	029°16'15.9"E
KK144	47°00'58.9"N	029°15'22.9"E
KK143	46°56'01.1"N	029°14'30.9"E
KK142	46°55'53.3"N	029°07'13.1"E
RW26 / KK141	46°55'41.77"N	028°57'16.14"E
KK140	46°55'16.4"N	028°37'33.1"E
KK145	46°51'05.8"N	029°15'46.5"E